

Worksite Partners  
Extending a Helping Hand

A & W	Food Bank Coalition San Luis	Pete Johnston Chevrolet
A to Z Books	Fremont Theater	PetSmart
Ace Hardware	Goodwill Industries	Poor Richards Press
Adelaide Floral	Grand Performance Music	PRYDE
Albertsons	Great American Melodrama	Quiznos
All Star Pets	Growing Grounds Farm	Ralphs
Amtrak	Higher Groundz	Rite Aid
Animal Hospital	Holloway's Christmas Farm	Ron's Nursery
Arroyo Grande Community Hospital	Hollywood Video	Rose's Landing
	Home Town Buffet	Salon Lux
Arroyo Grande Fire Station	Jamba Juice	San Luis Coastal Custodial
Atascadero High School	K Mart	San Luis Obispo Airport
Barnes & Noble	Klondike Pizza	SLO County Library
Bay Laurel Nursery	Kragen Auto	Santa Maria Tire
Beach Cycle Rentals	KSBY	Season Custom Cuisine
Best Buy	LoLo's Mexican Restaurant	SLO Chai Tea
Boys and Girls Club	Longs Drugs	SLO Planning & Building
Cal Poly Campus Dining	Lopez Lake Marina	Spencer's Fresh Market
California Division of Forestry	Los Osos Fitness Works	Splash Café
Carrows Restaurant	Los Osos Valley Nursery	Spyglass Shell
Chalk Mountain Golf	Marshall's	Subway
Charles Paddock Zoo	McDonald's	Taco Bell
Coldstone Creamery	Mervyns	Takken's Shoes
Cole Chrysler Dodge	Michaels Arts & Crafts	Taste Freez
Cookie Crock Warehouse	Mid State Fair	Tennis Warehouse
Culinary Arts Academy	Monument Skate Shop	Tiger Lily Salon
CVS Pharmacy	Mullahey Ford	Trader Joe's
Dawna's Pet Parlor	Nipomo Feed	Van Heusen
Dollar Tree	Nipomo Properties	Veterinary Medical Clinic
Domino's Pizza	Oceano Nursery	Video Palace
Donna's Childcare	Old Navy	Village House Pizza
El Camino Veterinary Hospital	Olde Port Inn	Vons
	Pacific Coast Home & Garden	Wal-Mart
Exploration Station	Panda Express	Wet Pets
Fine Tuned Instruments LLC	Paper Outlet	Woods Humane Society

San Luis Obispo County  
Special Education Local Plan Area  
(SELPA)

Interested in working with a student?  
For more information contact  
WorkAbility I staff.

**Loretta Butterfield,**  
SELPA Program Specialist  
WorkAbility I Project Director  
San Luis Obispo County SELPA  
8005 Morro Road  
Atascadero, CA 93422  
(805) 782-7329  
fax (805) 466-1473

**Michelle Vidal,** (805) 593-3144  
Job Placement Specialist  
San Luis Coastal Unified School District  
Central Coast COE Programs

**Terri Sherwin,** (805) 466-8181 x311  
Job Placement Specialist  
Atascadero Unified School District  
Templeton Unified School District  
North County COE Programs

**Livia Signorelli,** (805) 471-7070  
Job Placement Specialist  
Lucia Mar Unified School District  
South County COE Programs

**Debbie Stone,** (805) 782-7302  
Administrative Assistant for the  
Program Specialists

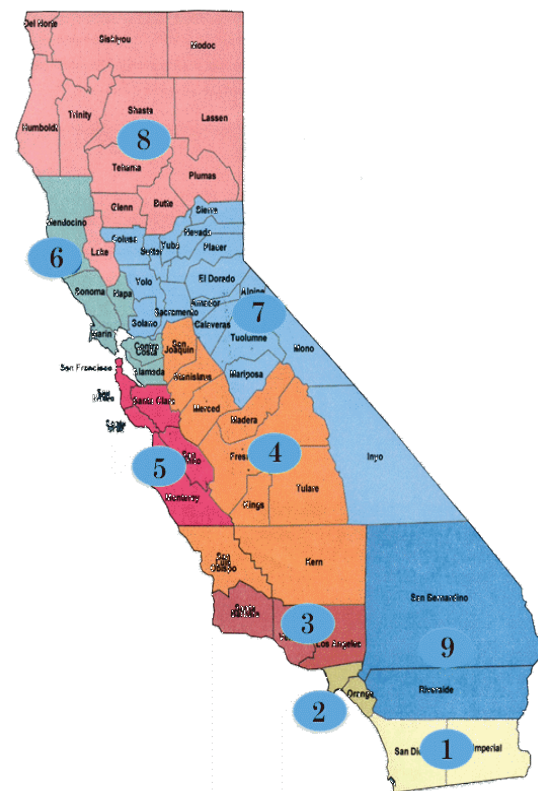
**Jill Heuer,** (805) 782-7301  
SELPA Director



Revised September 2008

# WorkAbility I

## Where Experience Makes a Difference



San Luis Obispo County  
Special Education Local Plan Area  
(SELPA)

# WorkAbility I

## What is WorkAbility I?

WorkAbility I is a vocational program serving special education students. It is designed to promote career awareness and exploration while students complete their secondary education program. WorkAbility I provides students with opportunities for job shadowing, paid work/experience, and limited term support and guidance from vocational personnel. WorkAbility I is available in the San Luis Obispo SELPA through a grant from the California Department of Education.

## Who is Eligible?

- Students 16-21 years of age with an active IEP (Individual Education Program)
- Junior standing
- Referrals are made through high school special education staff



## What Services are Provided for Student/Trainees?

- Learn to earn
- Interest/ability evaluation
- Curriculum focusing on comprehensive job-seeking and job-keeping skills
- Career exploration
- Work experience
- Interagency collaboration
- Potential for growth in self confidence, responsibility, initiative, independence, and work skills

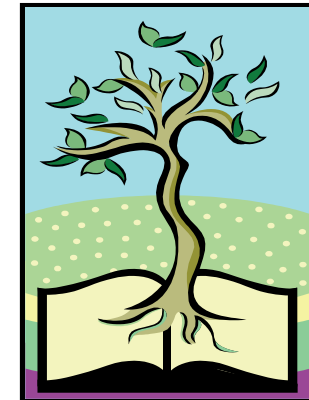
## For Businesses/ Employers:

- Screened, job-ready trainees, future employees
- Subsidized training wages; Worker's Compensation coverage
- Tax credit incentives when appropriate
- Ongoing employee support services for monitoring and/or job coaching
- Opportunity to assist a young worker in developing positive work habits



## How Can Your Business Benefit?

- Reduced hiring costs
- No-cost, no-obligation opportunity to “try out” potential employees
- Increased community involvement



## A message to Employers...

The WorkAbility I Program was brought to San Luis Obispo County SELPA in 1988 to assist the transition of high school students from the classroom to the work force. Since that time, hundreds of students have been placed in private businesses with a subsidized wage and many of these students were hired directly. All have received valuable work experience and have had the opportunity to develop the pre-employment, social and work skills needed to make informed career decisions.

## ***WorkAbility 1***

### **Note to our business partners:**

WorkAbility 1 believes that employment is the portal to quality life.

Having said that, please consider that for students with disabilities after 1 year out of school, 50% are UNemployed, and for those who are working, 40% are UNDERemployed.

We know students with a disability can be an employee with CAPABILITY. Consider also, WorkAbility 1 understands that you must keep the needs of your business first.

We work hard to make a good match between our students' abilities and interests and your business needs. In this manner, we can make a good job match to provide your business needs as well as a good learning environment for our students.

WorkAbility 1 always works for the WIN / WIN, for both students and business partners.

---