

Member LEAs

Almond Acres Charter Academy
Eileen Higgins
Director, Special Education

Atascadero USD
Lori Thomas-Hicks
Director, Student Intervention

Bellevue-Santa Fe Charter
Holly Warrick
Principal

Cayucos ESD
Adam Helfand
Director, Special Education

Coast USD
Adam Helfand
Director, Special Education

Lucia Mar USD
Jennifer Handy
Director, Special Education

Paso Robles JUSD
Amber Gallagher
Director, Special Education

Pleasant Valley JUESD
Wendy Nielsen
Superintendent

San Luis Coastal USD
Diane Frost
Exec Dir, Student Support

SLO County Office of Education
Holly Phillips
Director, Special Education

San Miguel JUSD
Stephanie Schofield
Director, Special Education

Shandon JUSD
Danya Pratt
Coordinator, Special Education

Templeton USD
Dee Dee Mello-Wisch
Director, Special Education

Agenda
SELPA Governing Council

January 11, 2019
8:15 - 9:15 a.m.

Morro Road Education Center, 107
8005 Morro Road, Atascadero CA 93422

1.0 Call Public Session to Order

Dr. James Brescia, Chair, County Superintendent of Schools

SELPA Governing Council Members:

Mr. Bob Bourgault, Superintendent, Almond Acres Charter
Mr. Tom Butler, Superintendent, Atascadero USD
Ms. Holly Warrick, Principal, Bellevue-Santa Fe Charter
Mr. Scott Smith, Superintendent, Cayucos ESD
Vacant, Superintendent, Coast USD
Mr. Andy Stenson, Superintendent, Lucia Mar USD
Dr. Julian Crocker, Interim Superintendent, Paso Robles JUSD
Ms. Wendy Nielsen, Superintendent, Pleasant Valley JUESD
Dr. Eric Prater, Superintendent, San Luis Coastal USD
Dr. Curt Dubost, Superintendent, San Miguel JUSD
Ms. Kristina Benson, Superintendent, Shandon JUSD
Dr. Joe Koski, Superintendent, Templeton USD

San Luis Obispo SELPA Staff:

Ms. Liz Smith, Director

2.0 Establishment of Quorum

3.0 Consent Agenda

(Members may remove items from Consent Agenda)

3.1 Approval of Minutes from December 14, 2018

3.2 Approval of Agenda for January 11, 2019

4.0 Public Comment

Government Code 54954.3 provides that, before or during the Governing Council's consideration of an item, the public may address the Governing Council directly on any item of interest that is within the Governing Council's purview, provided that no action shall be taken on an item not appearing on the agenda unless otherwise authorized by Government Code 54954.2(b).

5.0 Action Item

5.1 SELPA Report to District Boards

The SELPA seeks direction/action for brief presentations to LEA Boards.

6.0 Information Items

6.1 California Department of Education Monitoring

The SELPA Director will give an update on the current status of reviews in SLO SELPA.

6.2 December 1, 2018 Census

The SELPA Director will share metrics on SELPA-wide identification by ethnicity, grade, age and disability as well as any anomalies.

6.3 Interagency Agreement between the San Luis Obispo County Special Education Local Plan Area and San Luis Obispo County Public Health Department, Children's Medical Services, California Children's Services

The SELPA Director will share a draft of the proposed Interagency Agreement as a first reading.

7.0 SELPA Director's Report

Information, communication and reports will be presented by the SELPA Director.

8.0 Board Member Comments

Each member of the Governing Council may report about various matters related to the SELPA. There will be no Board discussion except to ask questions and no action shall be taken unless listed on a subsequent agenda.

9.0 Future Planning

9.1 Next Meeting Date: March 8, 2019 (Location TBD)

10.0 Adjournment

The San Luis Obispo County SELPA is committed to making its Board meetings accessible to all persons. By request, alternative agenda document formats are available to individuals with special needs. To arrange an alternative agenda document format or to arrange aid or services to modify or accommodate an individual with special needs to permit participation in a public meeting, please contact the San Luis Obispo SELPA office via phone at (805) 782-7301 or submit electron mail to ksallac@sloselpa.org.

**Annotation – Agenda Items 3.1 & 3.2
Governing Council
January 11, 2019**

Agenda Item

- 3.1 Approval of Minutes from December 14, 2018
- 3.2 Approval of Agenda for January 11, 2019

Item Type

Action

Summary of Key Issues

The minutes of the December 14, 2018 Governing Council and the agenda for the January 11, 2019 Governing Council are presented for adoption.

Summary of Previous Action

None

Recommendation

The SELPA Director recommends that the Governing Council approve the Consent Agenda as presented.

Attachments to this Agenda Item

Attachment: Minutes, Governing Council Meeting, December 14, 2018



Draft Minutes

**SAN LUIS OBISPO COUNTY
SELPA GOVERNING COUNCIL
December 14, 2018 ~ 8:15 am
San Luis Obispo COE Boardroom
3350 Education Drive, San Luis Obispo**

PRESENT

Dr. James Brescia, Dr. Curt Dubost (arrived 8:36 am), Mr. Tom Butler, Dr. Eric Prater (arrived 8:41 am), Ms. Liz Smith, Mr. Scott Smith, Mr. Andy Stenson, Ms. Jennifer Gaviola for Mr. Chris Williams, Ms. Holly Warrick (arrived 8:32), Ms. Kristina Benson (arrived 9:15 am), Dr. Victoria Schumacher, Ms. Wendy Nielsen

ABSENT

Mr. Bob Bourgault, Dr. Joe Koski

GUESTS

Ms. Amber Gallagher, Ms. Lori Thomas-Hicks, Ms. Val Kraskey, Ms. Deborah Cleere, Mr. Sheldon Smith, Ms. Katy Bates, Ms. Carol Kenyon, Dr. Jill Stearns

1. CALL TO ORDER

Dr. Brescia called the meeting to order at 8:20 am.

2. ESTABLISHMENT OF QUORUM

Quorum was established with eight (8) Governing Council members in attendance.

3. CONSENT AGENDA

3.1 Approval of Minutes from November 16, 2018

3.2 Approval of Agenda for December 14, 2018

MOTION: STENSON/BUTLER. A motion passed approving the consent agenda. (8-0)

4. PUBLIC COMMENT

There were no comments from members of the public.

5.0 ACTION ITEM

5.1 Educationally Related Social-Emotional Supports and Services (ERSESS)

Ms. Smith reviewed the two proposed AB114 allocation models. A lengthy discussion was held on the proposed FTEs, funding amounts, job descriptions, recruitment for LMFT, costs, and allocating funds to a position as opposed to services. The discussion was redirected back to funding allocations as program discussions are ongoing. Option 1 offered an off the top allocation for therapeutic services to CJ, Vicente and the smalls, RTC Board and Care, RTC case management, and SELPA administration. Option 2 allocated all AB114 revenue to LEAs based on ADA.

*MOTION: STENSON/DUBOST. A motion passed to approve the Option 1 allocation after removing specificity of *FTEs.*

(The FTE amount is the maximum subsidy funding for the needs of each specified program.)*

6.0 INFORMATION ITEMS

6.1 Performance Indicator Reviews & Differentiated Assistance

Ms. Smith presented an overview of Performance Indicator Reviews (due in late January) the relationship to Differentiated Assistance and the anticipated process. This information is not set; CDE will hold a workshop on February 6 for SLO and Santa Barbara LEAs on the process.

6.2 Maintenance of Effort

Ms. Bates shared a PowerPoint with MOE calculations, 17/18 stats, the four reports due annually and strategies. A discussion was held on the SACS report and local contributions to special education.

6.3 California Children's Services

Ms. Smith anticipates a draft Interagency Agreement will be available for review in January.

7.0 SELPA DIRECTOR'S REPORT

Ms. Smith reported on recent SELPA professional learning activities and briefly reviewed Fast Facts brochure distributed, along with local (both SELPA and LEA) metrics from the December 1 census.

Ms. Cleere shared information about the upcoming Assistive Technology Fair on February 20, 2019. Save the Date and watch for an invitation to attend the showcase and lunch.

8.0 Board Member Comments

Dr. Brescia presented Kathy Sallac, SELPA, a plaque and resolution in appreciation of 15 years of service and extended appreciation to Dr. Schumacher for her services to Coast USD. Both are retiring.

Mr. Butler thanked the group for promoting the Dr. Clayton Cook workshop next week, December 18. Ms. Thomas-Hicks invited Dr. Brescia as a guest.

9.0 Future Planning

None.

10.0 ADJOURNMENT

The meeting adjourned at 9:41 am.

The San Luis Obispo County SELPA is committed to making its Board meetings accessible to all persons. By request, alternative agenda document formats are available to individuals with special needs. To arrange an alternative agenda document format or to arrange aid or services to modify or accommodate an individual with special needs to permit participation in a public meeting, please contact the San Luis Obispo SELPA office via phone at (805) 782-7301 or submit electronic mail to ksallac@sloselpa.org.

**Annotation – Agenda Item 5.1
Governing Council
January 11, 2019**

Agenda Item

5.1 Special Education Local Plan Area (SELPA) LEA Board Reports

Item Type

Action

Summary of Key Issues

The SELPA provides support to all Local Education Agencies in the county. An annual update, specific to each Board needs/desires, is offered.

Summary of Previous Action

None

Recommendation

The SELPA Director seeks direction/action on this item.

Attachments to this Agenda Item

None

**Annotation – Agenda Item 6.1
Governing Council
January 11, 2019**

Agenda Item

6.1 California Department of Education Monitoring & Reviews

Item Type

Information

Summary of Key Issues

LEAs received Annual Determination Notifications from the CDE on December 18, 2018 reflecting participation in the immediate prior year's monitoring activities, the number of years identified for the activity, as well as the current year's activities. The SELPA Director will share what constitutes each activity and SLO LEAs current status for each activity.

Summary of Previous Action

None

Recommendation

Review

Attachments to this Agenda Item

Special Education Monitoring: The new paradigm for LEAs

**Annotation – Agenda Item 6.2
Governing Council
January 11, 2019**

Agenda Item

6.2 December 1, 2018 Census

Item Type

Action

Summary of Key Issues

The annual December 1 census provides SELPA-wide metrics, including identification by age, grade, district, disability, and ethnicity for students birth through age 22. The SELPA Director will share some of this newly certified data.

Summary of Previous Action

None

Recommendation

None

Attachments to this Agenda Item

Special Education Annual Data Comparison Report
LEAs by Disability
LEAs by Grade
LEAs by Age Group
LEAs by Ethnicity

Special Education Annual Data Comparison Report

SELPA: 4000 San Luis Obispo County SELPA

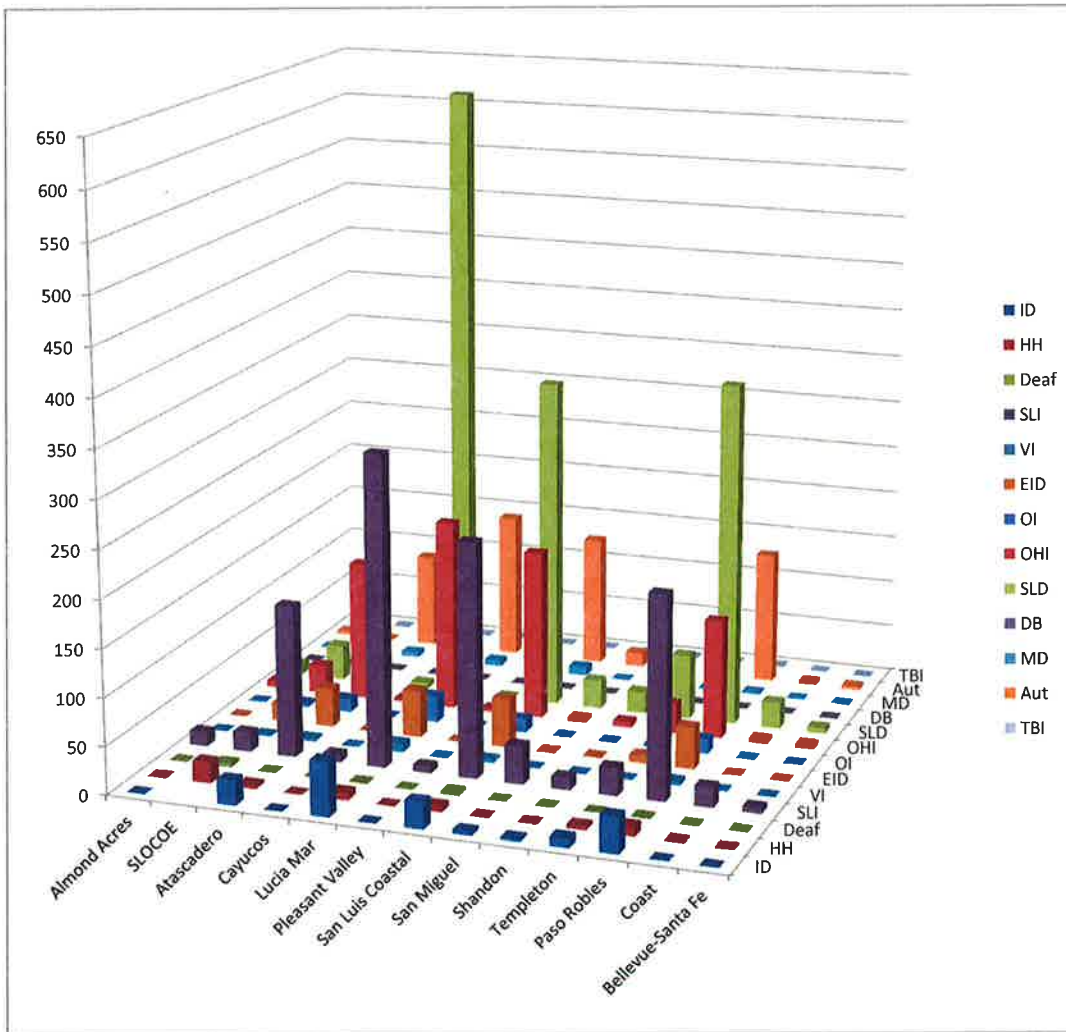
Disability														Total
ID	HH	DEAF	SLI	VI	ED	OI	OHI	SLD	DB	MD	AUT	TBI		Total
De2005	212	26	6	1,246	29	164	109	204	1,943	1	26	175	10	4,151
De2006	201	40	11	1,266	27	188	116	219	1,868	0	26	201	14	4,177
De2007	193	41	8	1,172	31	195	120	240	1,758	0	26	238	13	4,035
De2008	183	49	8	1,128	31	200	125	258	1,707	0	22	268	13	3,992
De2009	183	45	9	1,117	30	186	128	252	1,693	0	17	295	15	3,970
De2010	178	50	11	1,103	26	187	134	282	1,676	0	12	325	14	3,998
De2011	185	50	13	1,052	28	185	130	304	1,705	0	12	379	13	4,056
De2012	183	55	13	1,086	22	199	128	323	1,696	0	14	425	11	4,155
De2013	190	59	12	1,058	20	224	110	386	1,634	0	14	443	12	4,162
De2014	186	58	10	1,054	21	235	101	429	1,684	0	14	469	13	4,274
De2015	195	55	9	969	24	241	103	487	1,745	0	17	504	9	4,358
De2016	184	55	9	984	25	231	97	560	1,743	0	16	562	10	4,476
De2017	172	52	11	1,044	22	227	85	639	1,739	0	23	570	5	4,589
De2018	166	55	9	1,098	20	214	78	743	1,725	0	30	588	6	4,732
	-6	3	-2	54	-2	-13	-7	104	-14		7	18	1	
%	-3.48	5.76	-18.18	5.17	-9.09	-5.72	-8.23	16.27	-0.80	***.***	30.43	3.15	20.00	***.***

Grade																		
	Inf	Pres	Kndr	1	2	3	4	5	6	7	8	9	10	11	12	Ungr	Oth	Total
De2005	37	405	200	227	229	298	303	293	305	289	309	300	337	300	281	0	38	4,151
De2006	47	358	222	234	256	249	330	303	293	302	295	308	316	332	291	0	41	4,177
De2007	35	350	210	245	238	272	257	317	276	286	285	293	307	288	311	0	65	4,035
De2008	38	346	218	245	238	261	292	272	302	275	282	289	297	291	272	0	74	3,992
De2009	40	368	227	241	269	262	290	283	256	288	265	277	279	286	292	0	47	3,970
De2010	48	412	192	256	254	271	289	297	263	261	282	278	293	266	274	0	62	3,998
De2011	45	379	242	220	255	277	306	303	289	268	252	301	284	293	271	0	71	4,056
De2012	39	411	247	265	220	255	283	334	321	282	269	263	318	292	271	0	85	4,155
De2013	39	387	249	262	280	235	258	299	329	320	288	276	269	308	275	0	88	4,162
De2014	37	388	262	235	281	303	276	286	296	317	323	304	283	282	317	0	84	4,274
De2015	33	342	254	273	267	291	314	300	303	302	318	326	330	315	294	0	96	4,358
De2016	42	363	234	271	295	313	303	332	318	324	310	327	324	337	293	0	90	4,476
De2017	28	403	249	242	296	324	339	331	363	326	314	314	315	342	323	0	80	4,589
De2018	37	419	260	272	271	343	335	362	358	367	339	309	322	334	332	0	72	4,732
	9	16	11	30	-25	19	-4	31	-5	41	25	-5	7	-8	9		-8	
%	32.14	3.97	4.41	12.39	-8.44	5.86	-1.17	9.36	-1.37	12.57	7.96	-1.59	2.22	-2.33	2.78	***.***	-10.00	

* Circles indicate a change of population that needs to be examined and explained.

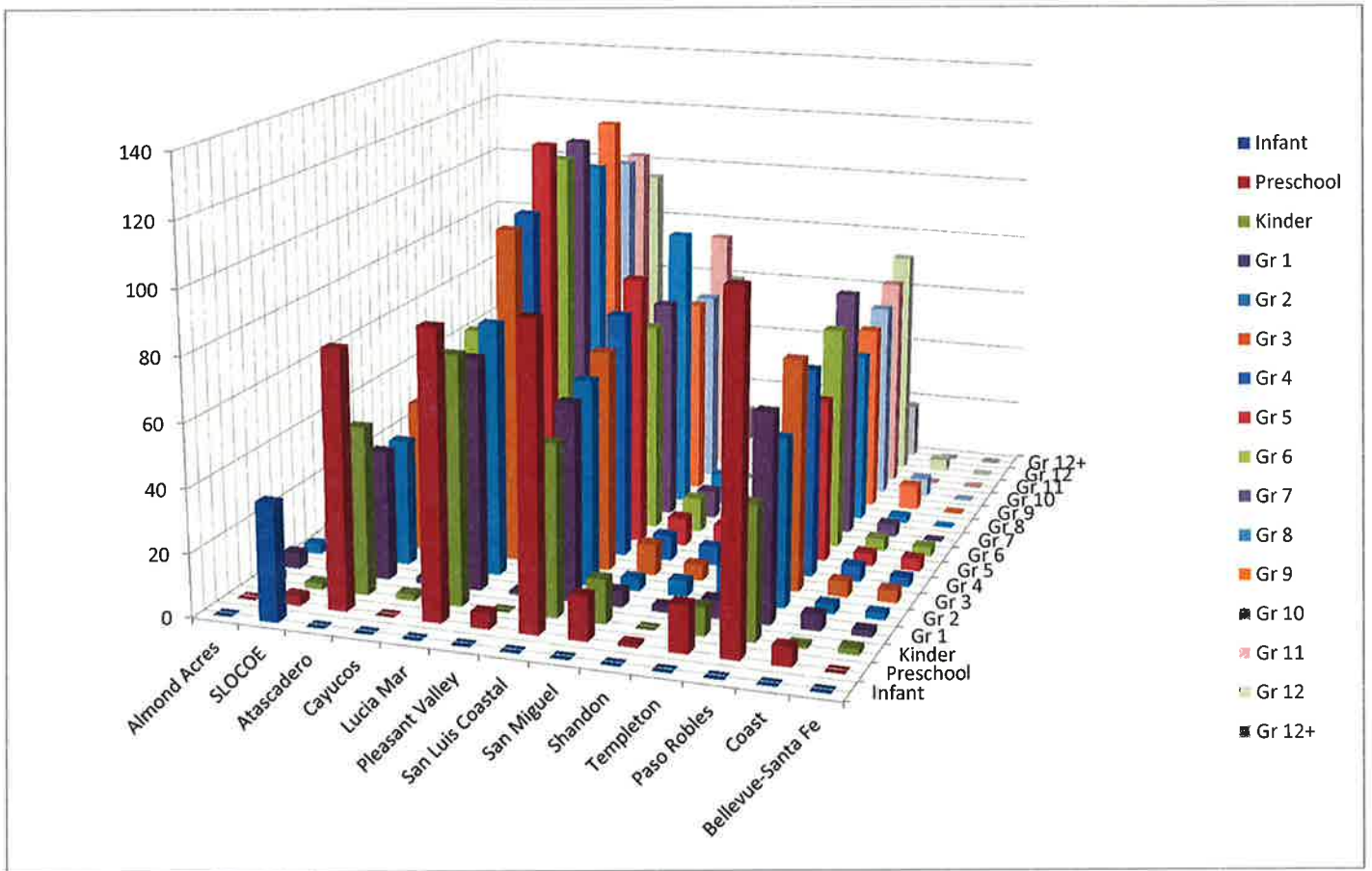
Districts by Disability

District of Service	ID	HH	Deaf	SLI	VI	EID	OI	OHI	SLD	DB	MD	Aut	TBI	TOTAL
Almond Acres	0	0	0	15	0	0	0	7	12	0	0	4	0	38
SLOCOE		22	4	20	1	19	4	30	37	0	7	0	0	144
Atascadero	26	4	0	159	3	41	14	147	166	0	5	100	2	667
Cayucos	0	0	0	8	0	0	0	3	6	0	0	1	0	18
Lucia Mar	57	8	1	325	9	49	28	201	642	0	6	154	2	1482
Pleasant Valley	0	0	0	7	0	0	0	3	1	0	0	0	0	11
San Luis Coastal	28	6	3	244	3	51	14	178	346	0	9	138	1	1021
San Miguel	4	0	0	40	0	1	0	4	30	0	0	15	0	94
Shandon	3	0	0	13	0	1	0	6	23	0	1	2	0	49
Templeton	10	4	0	29	0	8	3	31	68	0	0	27	0	180
Paso Robles	38	10	1	211	4	44	15	125	360	0	2	140	1	951
Coast	0	1	0	21	0	0	0	4	28	0	0	3	0	57
Bellevue-Santa Fe	0	0	0	6	0	0	0	4	6	0	0	4	0	20
TOTAL	166	55	9	1098	20	214	78	743	1725	0	30	588	6	4732



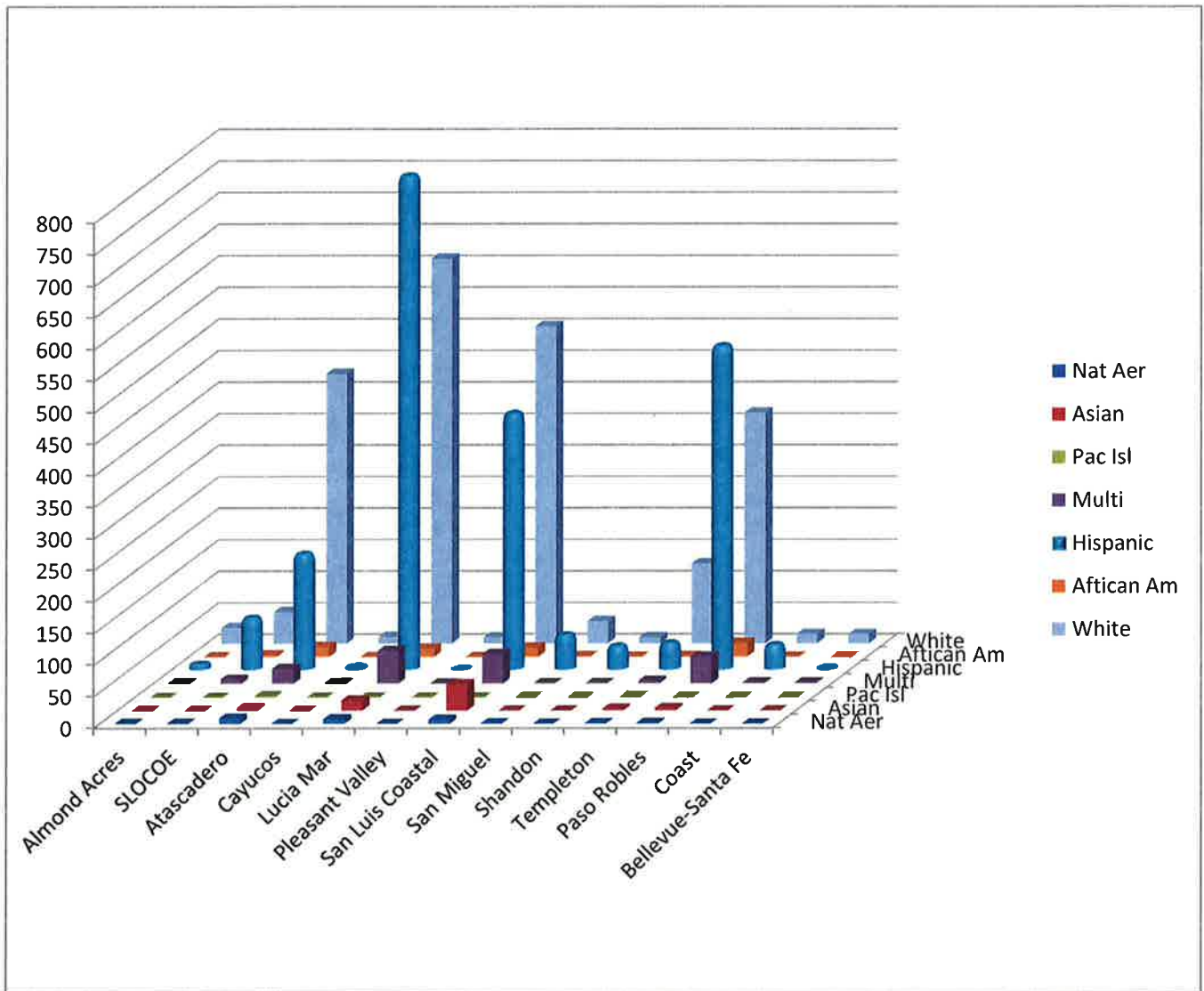
**LEAs by Grade
12/01/2-018**

District of Service	Infant	Preschool	Kinder	Gr 1	Gr 2	Gr 3	Gr 4	Gr 5	Gr 6	Gr 7	Gr 8	Gr 9	Gr 10	Gr 11	Gr 12	Gr 12+	TOTAL
Almond Acres	0	0	3	5	3	5	10	4	4	2	2	0	0	0	0	0	38
SLOCOE	37	3	2	3	2	4	1	6	4	7	1	7	13	21	31	2	144
Atascadero	0	81	53	41	40	48	40	40	61	52	48	31	44	38	40	10	667
Cayucos	0	0	2	2	2	2	2	3	0	4	1	0	0	0	0	0	18
Lucia Mar	0	90	78	73	80	106	108	127	120	123	112	124	108	108	98	27	1482
Pleasant Valley	0	5	0	1	1	1	1	2	0	0	0	0	0	0	0	0	11
San Luis Coastal	0	95	54	62	65	70	78	86	67	71	91	64	63	81	63	11	1021
San Miguel	0	14	14	5	4	10	8	9	11	9	10	0	0	0	0	0	94
Shandon	0	1	0	2	5	5	6	8	4	2	2	3	4	4	3	0	49
Templeton	0	15	9	6	11	10	7	17	9	14	15	12	20	13	18	4	180
Paso Robles	0	109	42	65	53	73	66	52	71	79	55	60	64	69	75	18	951
Coast	0	6	1	5	3	5	5	4	4	4	2	8	6	0	4	0	57
Bellevue-Santa Fe	0	0	2	2	2	4	3	4	3	0	0	0	0	0	0	0	20
TOTAL	37	419	260	272	271	343	335	362	358	367	339	309	322	334	332	72	4732



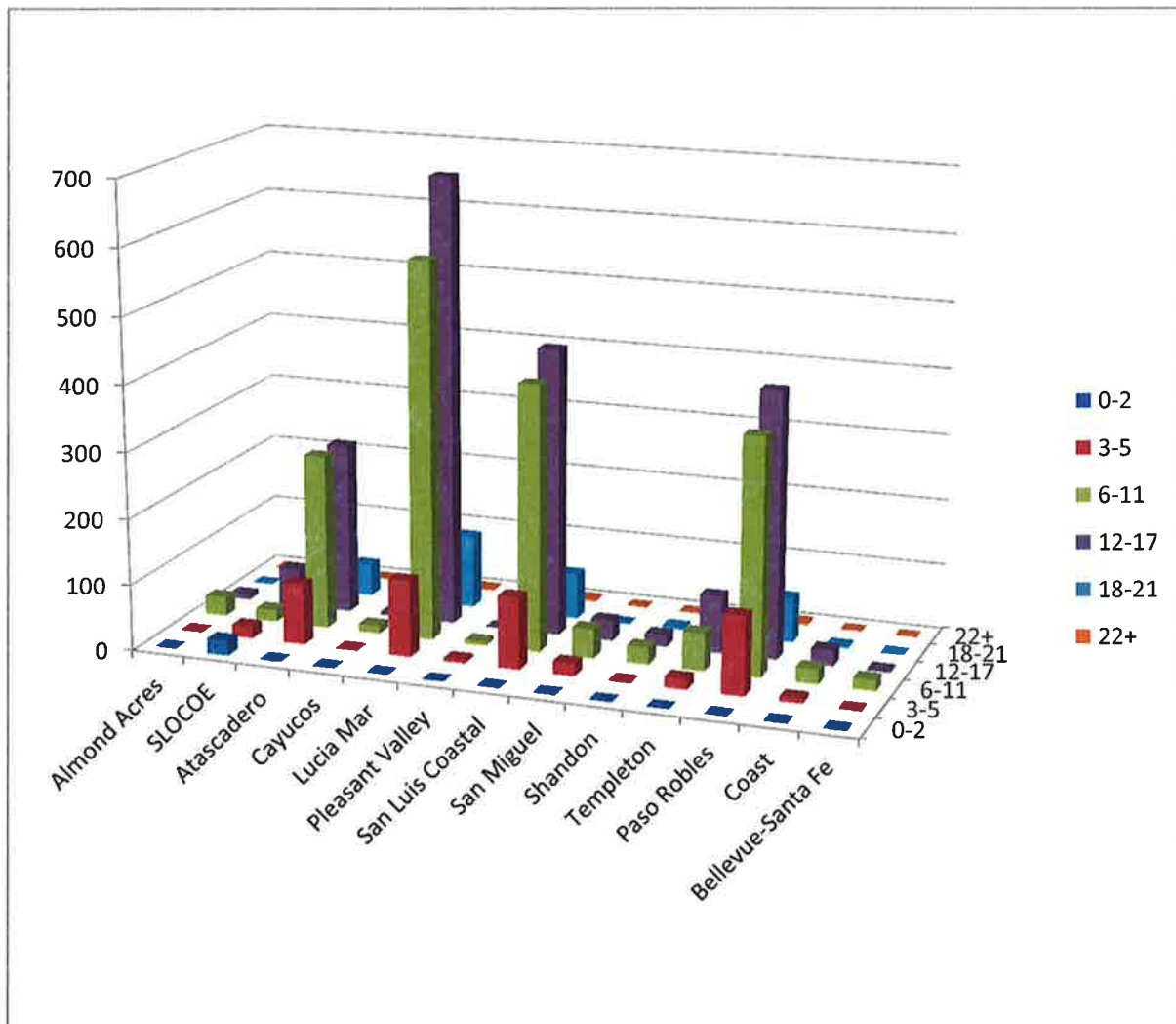
LEAs by Ethnicity
12/01/2018

District of Service	Nat Aer	Asian	Pac Isl	Multi	Hispanic	Aftican Am	White	TOTAL
Almond Acres		1	0	0	2	10	0	25
SLOCOE		1	0	0	7	83	3	50
Atascadero		9	4	2	24	184	16	428
Cayucos		0	0	0	2	5	0	11
Lucia Mar		8	16	0	52	783	13	610
Pleasant Valley		0	0	0	0	1	0	10
San Luis Coastal		7	42	0	47	407	15	503
San Miguel		1	0	0	1	56	1	35
Shandon		0	0	0	1	38	0	10
Templeton		1	3	1	4	43	1	127
Paso Robles		2	4	0	43	514	22	366
Coast		0	0	0	2	40	0	15
Bellevue-Santa Fe		0	0	0	2	3	0	15
TOTAL	30	69	3	187	2167	71	2205	4732



**LEAs by Age Group
12/01/2018**

District of Service	0-2	3-5	6-11	12-17	18-21	22+	TOTAL
Almond Acres	0	1	29	8	0	0	38
SLOCOE	23	18	18	57	27	1	144
Atascadero	0	92	265	260	49	1	667
Cayucos	0	1	12	5	0	0	18
Lucia Mar	0	116	572	680	111	3	1482
Pleasant Valley	0	5	6	0	0	0	11
San Luis Coastal	0	109	403	436	69	4	1021
San Miguel	0	19	44	31	0	0	94
Shandon	0	1	26	18	4	0	49
Templeton	0	16	57	87	20	0	180
Paso Robles	0	119	357	403	68	4	951
Coast	0	7	23	24	3	0	57
Bellevue-Santa Fe	0	0	17	3	0	0	20
TOTAL	23	504	1829	2012	351	13	4732



**Annotation – Agenda Item 6.3
Governing Council
January 11, 2019**

Agenda Item

6.3 Interagency Agreement between the San Luis Obispo Special Education Local Plan Area and San Luis Obispo County Public Health Department, Children’s Medical Services, California Children’s Services (CCS)

Item Type

Action

Summary of Key Issues

The local Interagency Agreement was last executed in 2012. This draft is presented as a first reading.

Summary of Previous Action

None

Recommendation

Review for action

Attachments to this Agenda Item

Interagency Agreement draft